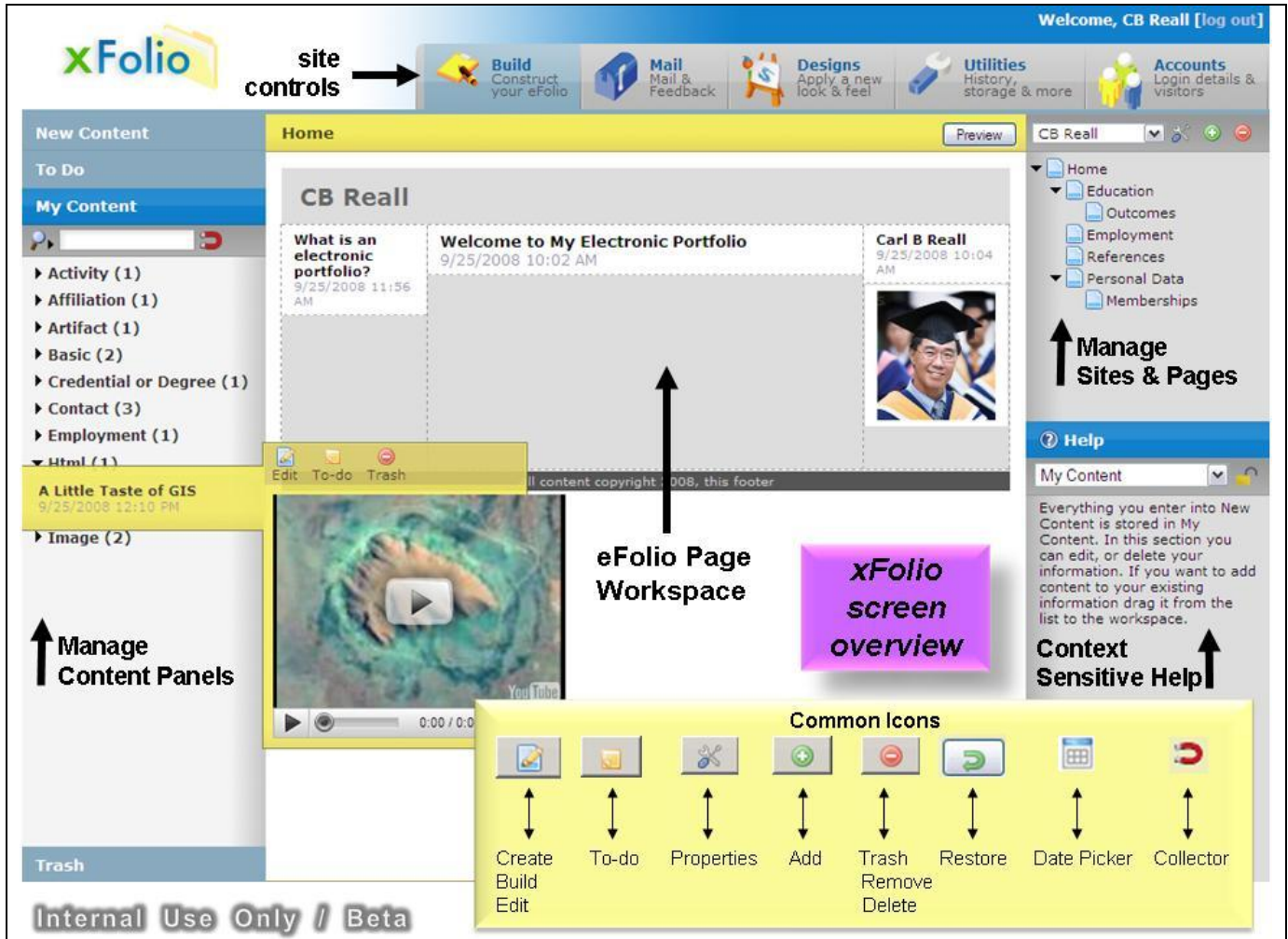


**Everything you thought you knew about eFolioWorld and eFolio Minnesota is about to change...**and it is not only because the look and feel of the interface are different.

When eFolio owners first access their site in Version 2.0 they will be greeted by a fresh new interface. The illustration below provides a snapshot of the xFolio Beta interface for individual users! (*xFolio is the code name for Version 2.0 development of eFolioWorld and eFolio Minnesota.*)



Users will encounter our content/object-oriented approach as they learn how to develop electronic pages and sites. With the beta-usage phase just days away, we anticipate that users will experience a sense of excitement combined with typical reactions to change.

Electronic portfolio users have often focused on the eFolio tools and resulting portfolio sites. This has, in the past, created a gap in development and process. Unfortunately that gap has directly impacted the value portfolios can play in the assessment of learning. I often refer to the gap as “portfolio thinking”...representing elements of design and planning needed by both educators and learners. I look forward to what users will experience in filling that gap as they discover what the new version of eFolio tools are positioned to contribute to learning communities, social learning, and instructional strategies.

Start now by thinking about content as discrete objects that can be used in many ways within a single portfolio. The simplest example may be found in the data fields identifying self, a peer or professional contact. Change your thinking that those “contact-related” fields create items about a person that contribute only to a “**Contact Me**” or “**References**” page. A contact may now be identified as someone who contributed to your work on a project or was a mentor in an activity. A contact might be identified

as an employer associated with a past job or a professor who evaluated your class work. As such, the contact can be linked to an artifact, event, or affiliation. Resulting content combinations will, in turn, be available as items posted on the pages of your portfolio site. The difference is that each content object (such as a contact) also remains uniquely available for re-use in a different context on a different page or within the pages of an alternative site.

The possibilities are endless when expanded to address the advantage of owning multiple personal portfolio sites as part of one account (e.g., Personal, Career, Education, Service) or the existence of shared sites available to members of defined groups and learning cohorts.

Join us over the next several weeks as we begin to discover how eFolio's expanded toolset will promote your experience with the power of portfolio thinking in a content/object-oriented interface.

As mentioned at the beginning of this article, **everything you thought you knew about eFolioWorld and eFolio Minnesota is about to change!** Experience it first by participating in the beta usage phase announced elsewhere in this issue.

---

**Contributed by Lynne Groves, Director of Instructional Strategies; eFolioWorld & eFolio Minnesota.**

Lynne's professional background is in higher education. Her most recent work in both Instructional Design, Curriculum Planning and Faculty Development, combined with many years as a college classroom instructor informs the potential learning strategies she envisions for Version 2.0 of eFolioWorld and eFolio Minnesota.